

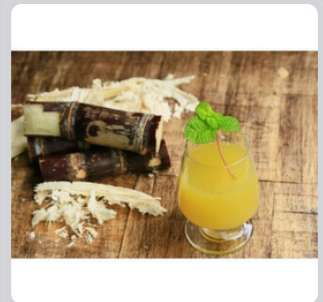
ELECTRIC SUGARCANE MACHINE



The Electric Sugarcane Machine was created by advanced creative, luxurious and goodlooking. The internal construction is tightly packed and reasonable. There are all made of stainless steel where get in touch with food. Its enclosed structure ensure hygiene production. Stainless steel corrugated rollers can completely press dry sugarcane. Rollers are mounted to heavy duty row precision ball bearings to accept heavy load, ensure long operation life and minimize maintenance costs. Luxury design, space saving, maybe powered by engine. This products is convenient, economic and easy to clean. The Sugarcane Machine with comprehensive functions and high quality. Therefore, it is the best choice & Ideal for any food service kiosks such as for families, hotels, restaurants and west-style food shops.

BSM-M

- Measurements (mm) : 340(W) x 460(L) x 790(H)
- Engine : 1HP
- Net Weight : 84kg



* Designs and specifications are subject to change for improvement without prior notice