

STAINLESS STEEL BAIN MARIE



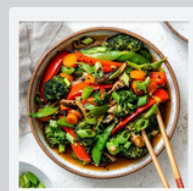
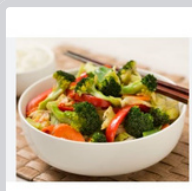
TEM-3

- Power: 1500W
- Voltage: 240V / 50Hz
- Temperature: 20-85°C
- Dimension: 590 x 385 x 270 mm
- Weight: 10kg

Features :

Importing advanced foreign technologies. The Bain Marie table incubator is novel in design, exquisite in craftsmanship, easy in operation, excellent in heat preservation and economical in energy consumption. Stainless steel structure, not rusty and easy to clean.

They are some deal necessities for restaurants, karaoke parties, hotel and other places of entertainment.



TEM-2

- Power: 1500W
- Voltage: 240V / 50Hz
- Temperature: 20-85°C
- Dimension: 580 x 400 x 300 mm
- Weight: 30kg

* Designs and specifications are subject to change for improvement without prior notice