

# WAFFLE BAKER MACHINE

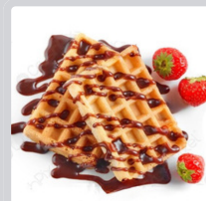
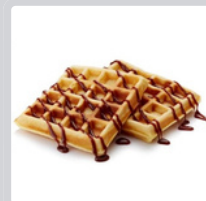


## Features:

- The Commercial Waffle Toaster is designed for baking waffle with independent heat control and cast iron molds .
- The baking molds are made of high grade cast iron with high thermal conductivity.
- This product is very suitable to bake food in the shops/fields and to provide hot food to the customer.
- The operation is very easy.

## BG-WB

- Power: 1.5Kw
- Voltage: 220V 50Hz
- Dimension: 310 x 380 x 250 mm



\* Designs and specifications are subject to change for improvement without prior notice