

ELECTRIC GRILL SALAMANDER

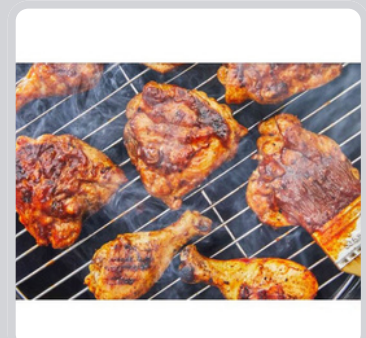
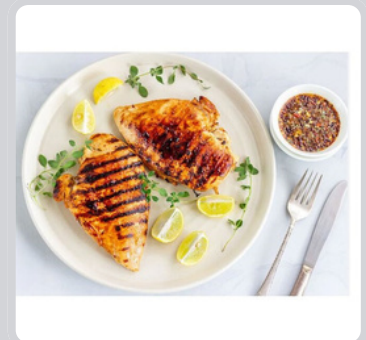


Features:

- Stainless steel construction
- Electric operated with infrared heater
- Regulate heat control provided
- Easy maintenance

EB-210

- Power: 2000 W
- Voltage: 240V / 50Hz
- Temperature: 60-300°C
- Dimension: 550 x 380 x 150mm
- Weight: 10 kg
- Origin: Taiwan



* Designs and specifications are subject to change for improvement without prior notice