

# ELECTRIC DEEP FRYER WITH CABINET



OP-26-1

## OP-26-1

- Voltage: 380V / 50Hz
- Power: 14kw
- Capacity: 0.42
- Volume(CBM): 0.42
- Machine Size (L x W x H): 400 x 830 x 960 MM
- Carton Size: 430 x 860 x 960 MM
- Net Weight: 35.5 / 38KG
- Material: Stainless Steel

### Features:

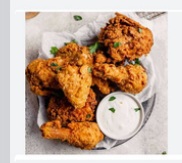
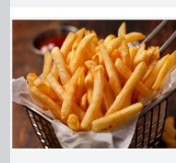
- Temperature limit device
- Timer
- Buzzer



OP-26-2

## OP-26-2

- Voltage: 380V / 50Hz
- Power: 14kw+14kw
- Capacity: 30L + 30L
- Volume(CBM): 0.77
- Machine Size (L x W x H): 800 x 830 x 960 MM
- Carton Size: 830 x 860 x 960 MM
- Net Weight: 76KG
- Material: Stainless Steel



\* Designs and specifications are subject to change for improvement without prior notice