

# ELECTRIC DEEP FRYER C/W TIMER



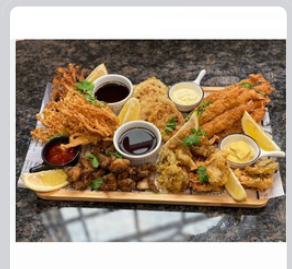
Commercial Grade Deep Fryer! !  
Great product for Supermarket, Meat Shop,  
Restaurant or Party use! ! !

**Features:**

- Commercial heavy-duty stainless steel constructed fryer
- Stainless steel fryer basket with plastic handle
- Stainless steel lid cover and residue plate
- Thermal control shuts off automatically to prevent overheating
- Thermal control turns back on automatically when temperature decreases
- Removable stainless steel fry tank for easy cleaning
- Temperature Control Switch adjusts from 50 C to 200

## TEF-10L-2

- Voltage: 220-240V/50Hz
- Power: 3250Kw x 2
- Capacity: 2 x 5L
- Size(mm): 590 x 440 x 285
- Weight: 12 kg



\* Designs and specifications are subject to change for improvement without prior notice