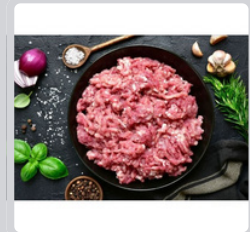
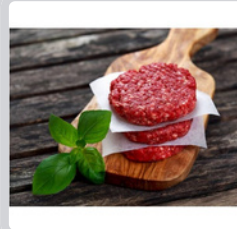


# MEAT & CHILI GRINDER MACHINE



## Features:

The BHM-32 Meat or Chili Grinding Machine is intended for heavy duty work in commercial food processing applications. Their exceptional reliability and attractive, heavy duty designs make them ideal for any open restaurant, hotel, kitchen and supermarket etc.



## BHM-32

- Power: 1 hp 1500rpm (1ph)
- Dimension: 470 (w) x 620(L) x 1100 (H) mm

\* Designs and specifications are subject to change for improvement without prior notice